



Staff Selection Commission
(Government Of India)

REGISTRATION NUMBER :
EXAM DATE : 3-September-2016
EXAM NAME : SSC Examination 2016
TOTAL MARKS : 200

CANDIDATE NAME :
EXAM START TIME : 10:00:00
EXAM DURATION : 01:15 Hrs
TOTAL NO OF QUESTIONS : 100

Question 1. Select the related word/letters/number from the given alternatives.

दिये गये विकल्पों में से संबंधित शब्द/अक्षरों/संख्या को चुनिए।

Cell : Cytology :: Birds : ?

कोशिका : कोशिका-विज्ञान :: पक्षी : ?

Options:

- 1) Odontology
दन्त-विज्ञान
- 2) Mycology
कवक-विज्ञान
- 3) Ornithology
पक्षी-विज्ञान
- 4) Etymology
व्युत्पत्ति-विज्ञान

Correct Answer: Ornithology

पक्षी-विज्ञान

Candidate Answer: Ornithology

पक्षी-विज्ञान

Question 2. Select the related word/letters/number from the given alternatives.

दिये गये विकल्पों में से संबंधित शब्द/अक्षरों/संख्या को चुनिए।

DHLP:WSOK::FJNR: ?

Options:

- 1) UQMI
- 2) TPLH
- 3) SOKG
- 4) VRNJ

Correct Answer: UQMI

Candidate Answer: UQMI

Question 3. Select the related word/letters/number from the given alternatives.

दिये गये विकल्पों में से संबंधित शब्द/अक्षरों/संख्या को चुनिए।

2:10::26:?

Options:

- 1) 50
- 2) 36
- 3) 42
- 4) 20

Correct Answer: 50

Candidate Answer: 36

Qmaths.in
SSC | IBPS | RAILWAYS | LIC | SIDBI

Question 4.

Downloaded from www.qmaths.in**For the following questions**

Find the odd word/letters/number pair from the given alternatives.

दिये गये विकल्पों में से विषम शब्द/ संख्या/ अक्षर युग्म चुनिये।

Options:

1) EHJ

2) JML

3) PSR

4) VYX

Correct Answer: EHJ**Candidate Answer:** EHJ

Question 5.

For the following questions

Find the odd word/letters/number pair from the given alternatives.

दिये गये विकल्पों में से विषम शब्द/ संख्या/ अक्षर युग्म चुनिये।

Options:

1) Tomcat

बिल्ला

2) Baby

शिशू

3) Fawn

हिरनी का बच्चा

4) Cub

शावक

Correct Answer: Baby

शिशू

Candidate Answer: Tomcat

बिल्ला

Question 6.

For the following questions

Find the odd word/letters/number pair from the given alternatives.

दिये गये विकल्पों में से विषम शब्द/ संख्या/ अक्षर युग्म चुनिये।

Options:

1) 11

2) 17

3) 19

4) 21

Correct Answer: 21**Candidate Answer:** 21

Question 7. Arrange the following words as per order in the dictionary.

निम्नलिखित शब्दों को शब्दकोश में दिए गए क्रम के अनुसार व्यवस्थित कीजिये

1. Patriot 2. Pastor 3. Patron 4. Pattern 5. Pastern

Qmaths.in

SSC | IBPS | RAILWAYS | LIC | SIDBI

Options:

1) 5,2,3,1,4

2) 5,2,1,3,4

3) 5,2,4,1,3

4) 5,2,4,3,1

Correct Answer: 5,2,1,3,4**Candidate Answer:** 5,2,1,3,4

Question 8. A series is given below with one term missing. Choose the correct alternative from the given ones that will complete the series.

नीचे एक अनुक्रम दिया गया है, जिसमें एक पद लुप्त है। दिए गए विकल्पों में से वह सही विकल्प चुनिये।

SCD, TEF, UGH, ?, WKL

Options:

1) CMN

2) VJI

3) VIJ

4) IJT

Correct Answer: VIJ**Candidate Answer:** VIJ

Question 9. A series is given below with one term missing. Choose the correct alternative from the given ones that will complete the series.

नीचे एक अनुक्रम दिया गया है, जिसमें एक पद लुप्त है। दिए गए विकल्पों में से वह सही विकल्प चुनिये।

124, 235, 346, 457, ?

Options:

1) 455

2) 465

3) 565

4) 568

Correct Answer: 568**Candidate Answer:** 568

Qmaths.in
SSC | IBPS | RAILWAYS | LIC | SIDBI

Question 10. F is the brother of A. C is the daughter of A. K is the sister of F. G is the brother of C. Who is the uncle of G?

F, A का भाई है। C, A की पुत्री है। K, F की बहन है। G, C का भाई है। G का चाचा कौन है ?

Options:

1) A

2) C

3) K

4) F

Correct Answer: F**Candidate Answer:** F

Question 11. If Jhansi is 12 ahead in rank of Prabha, who ranks 15th from last, then how many students are there in the class if Jhansi ranks 4th in order of merit ?

झाँसी रैंक में प्रभा से 12 स्थान आगे है और प्रभा आखिरी छात्र से 15वीं रैंक पर है। यदि झाँसी मेरिट क्रम में 4थे स्थान पर है तो उस कक्षा में कितने छात्र हैं ?

Options:

1) 23

2) 27

3) 30

4) 31

Correct Answer: 30**Candidate Answer:** 30

Question 12. From the given words, select the word which cannot be formed using the letters of the given word.

Downloaded from www.qmaths.in

निम्नलिखित विकल्पों में से वह शब्द चुनिये जो दिए गए शब्द के अक्षरों का प्रयोग करके नहीं बनाया जा सकता है।

ENVIRONMENT

Options:

1) ENTER

2) METRE

3) IRON

4) MOMENTUM

Correct Answer: MOMENTUM

Candidate Answer: MOMENTUM

Question 13. If 'BASKET' is written as 'TEKSAB' how can 'PILLOW' be written in that code?

यदि किसी कोड भाषा में 'BASKET' को 'TEKSAB' लिखा जाता है, तो उसी कोड भाषा में 'PILLOW' को कैसे लिखा जायेगा ?

Options:

1) LOWPIL

2) WOLLIP

3) LOWLIP

4) WOLPIL

Correct Answer: WOLLIP

Candidate Answer: WOLLIP

Question 14. If '+' means '-', '-' means 'x', 'x' means '÷' and '÷' means '+' then $2 \div 6 \times 6 \div 2 = ?$

यदि '+' का अर्थ है '-', '-' का अर्थ है 'x', 'x' का अर्थ है '÷' और '÷' का अर्थ है '+' तो $2 \div 6 \times 6 \div 2 = ?$

Options:

1) 1

2) 0

3) 10

4) 5

Correct Answer: 5

Candidate Answer: 5

Question 15. If $6 \times 9 \times 3 = 963$ and

$4 \times 8 \times 5 = 845$,

then $9 \times 4 \times 7 = ?$

यदि $6 \times 9 \times 3 = 963$ और

$4 \times 8 \times 5 = 845$, तो

$9 \times 4 \times 7 = ?$

Options:

1) 974

2) 479

3) 497

4) 749

Correct Answer: 497

Candidate Answer: 497

Qmaths.in
SSC | IBPS | RAILWAYS | LIC | SIDBI

Question 16. Select the missing number from the grid of responses

Downloaded from www.qmaths.in

दिए गए विकल्पों में से लुप्त अंक ज्ञात कीजिए ?

| | | |
|----|-----|----|
| 3 | 5 | 9 |
| 4 | 6 | ? |
| 3 | 7 | 2 |
| 36 | 210 | 36 |

Options:

1) 4

2) 3

3) 2

4) 1

Correct Answer: 2**Candidate Answer:** 2

Question 17. Ashok went 8 kms south and turned west and walked 3 kms. Again he turned north and walked 5 kms. He took a final turn to east and walked 3 kms. In which direction was Ashok from the starting point?

अशोक 8 कि.मी. दक्षिण की ओर चला और पश्चिम की ओर मुड़कर 3 कि.मी. चला। फिर वह उत्तर की ओर मुड़ा और 5 कि.मी. चला। अन्त में वह पूर्व दिशा की ओर मुड़ा और 3 कि.मी. चला। अशोक प्रारम्भिक स्थान से किस दिशा में था ?

Options:

1) East

पूर्व

2) North

उत्तर

3) West

पश्चिम

4) South

दक्षिण

Correct Answer: South

दक्षिण

Candidate Answer: South

दक्षिण

Question 18. Consider the given statement/s to be true and decide which of the given conclusions/assumptions can definitely be drawn from the given statement.

Statement: Ahimsa should be basic principle of human beings. All of us should practise Ahimsa.

Conclusions: I. We all know the real meaning of Ahimsa.

Conclusions: II. Ahimsa promotes global harmony.

निम्नलिखित प्रश्न में एक या दो वक्तव्य दिये गये हैं, जिसके आगे दो निष्कर्ष/मान्यताएं, I और II निकाले गये हैं। आपको विचार करना है कि वक्तव्य सत्य है चाहे वह सामान्यतः शर्त तथ्यों से भिन्न प्रतीत होता हो। आपको निर्णय करना है कि दिए गए वक्तव्य में से कोन-सा निश्चित रूप से सही निष्कर्ष/मान्यता निकाला जा सकता है ?

वक्तव्य : अहिंसा मानव जीवन का मूल सिद्धांत होना चाहिए। हम सभी को अहिंसा अपनानी चाहिए।

निष्कर्ष 1: हम सभी अहिंसा का वास्तविक अर्थ जानते हैं।

निष्कर्ष 2 : अहिंसा वैश्विक सौहार्द को बढ़ावा देती है।

Options:

1) only conclusion I follows

सिर्फ निष्कर्ष I निकलता है

2) only conclusion II follows

सिर्फ निष्कर्ष II निकलता है

3) Neither I conclusion nor II follows

निष्कर्ष I और II नहीं निकलते हैं

4) Both conclusion I & II follow

निष्कर्ष I और II निकलते हैं

Correct Answer: Neither I conclusion nor II follows

निष्कर्ष I और II नहीं निकलते हैं

Candidate Answer: only conclusion II follows

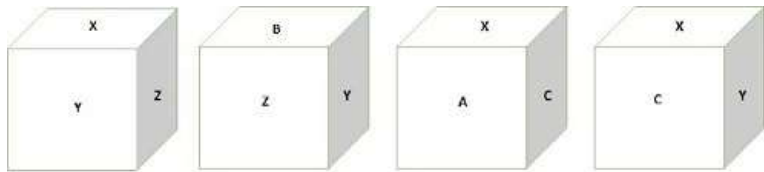
सिर्फ निष्कर्ष II निकलता है

Qmaths.in
SSC | IBPS | RAILWAYS | LIC | SIDBI

Question 19. Of a cubical container, all the six faces have different markings indicating the position of the container placed inside. Which symbol is opposite the face having C?

Downloaded from www.qmaths.in

एक घनीय कंटेनर के। सभी छः फलकों में अंदर पैक किए गए उपकरणों की स्थिति को दर्शाते हुए भिन्न-भिन्न चिन्ह अंकित किए गए हैं। कौन-सा चिन्ह C के पीछे है ?



Options:

1) Z

2) B

3) X

4) Y

Correct Answer: Z

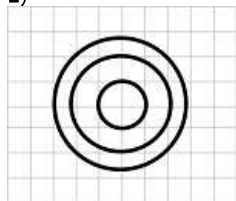
Candidate Answer: Z

Question 20. Identify the diagram that best represents the relationship among classes given below
Minutes, Days, Months

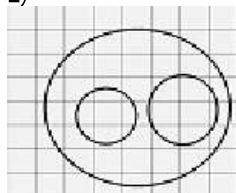
वह आरेख चुनिए जो नीचे दिए गए वर्गों के बीच सम्बंध को सही दर्शाता है।
मिनट, दिन, महीने

Options:

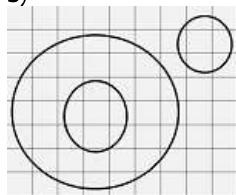
1)



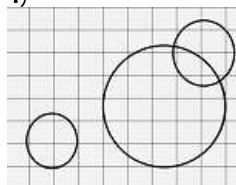
2)



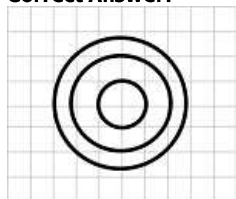
3)



4)

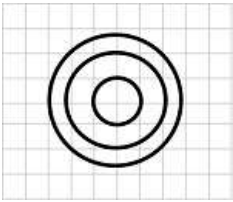


Correct Answer:



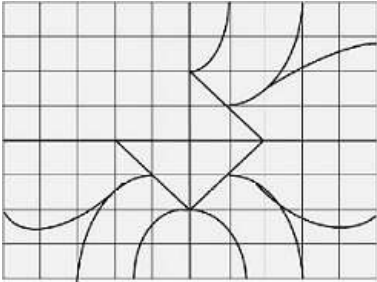
Qmaths.in
SSC | IBPS | RAILWAYS | LIC | SIDBI

Candidate Answer:

Downloaded from www.qmaths.in

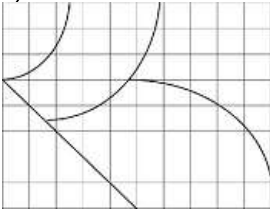
Question 21. Which answer figure will complete the pattern in the question figure?

कौन-सी उत्तर आकृति प्रश्न आकृति के प्रतिरूप को पूरा करेगी ?

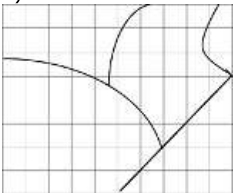


Options:

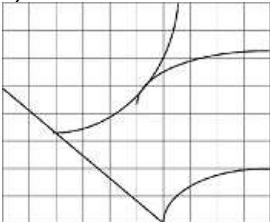
1)



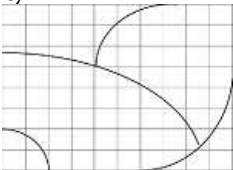
2)



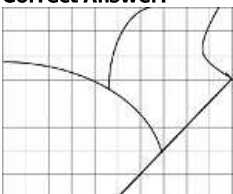
3)



4)



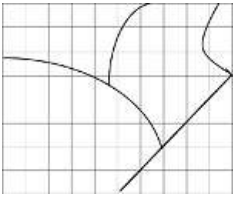
Correct Answer:



Qmaths.in

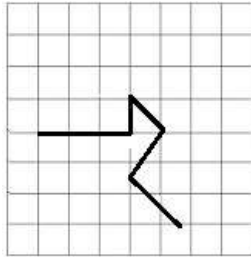
SSC | IBPS | RAILWAYS | LIC | SIDBI

Candidate Answer:

Downloaded from www.qmaths.in

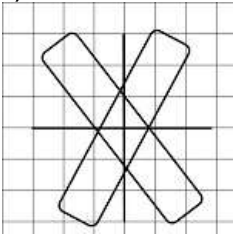
Question 22. From the given answer figures, select the one in which the question figure is hidden/embedded.

उस उत्तर आकृति को चुनिए जिसमें प्रश्न आकृति निहित है

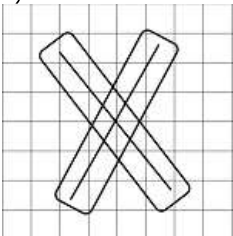


Options:

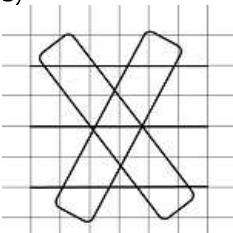
1)



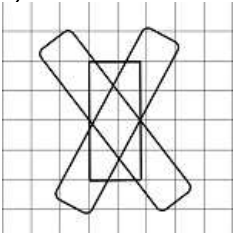
2)



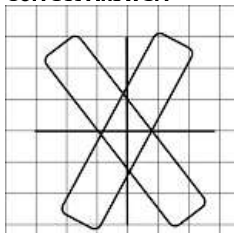
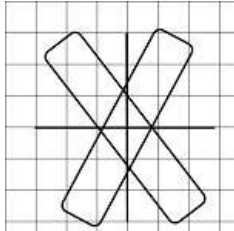
3)



4)

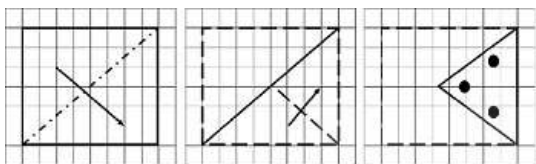


Qmaths.in
SSC | IBPS | RAILWAYS | LIC | SIDBI

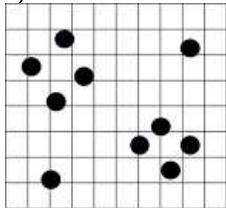
Correct Answer:**Candidate Answer:**

Question 23. A piece of paper is folded and cut as shown below in the question figures. From the given answer figures, indicate how it will appear when opened.

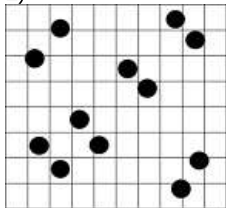
नीचे प्रश्न आकृतियों में दर्शयि चित्र अनुसार कागज को मोड़ने, काटने तथा खोलने के बाद वह किस आकृति जैसा दिखाई देगा ।

**Options:**

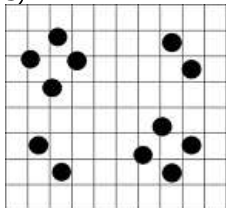
1)



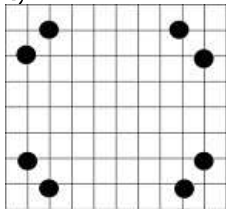
2)



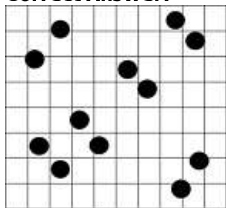
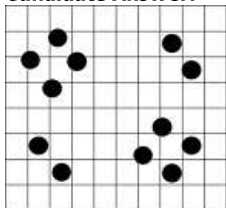
3)



4)

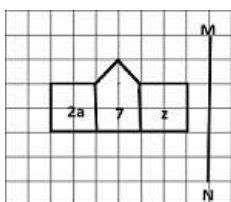


Qmaths.in
SSC | IBPS | RAILWAYS | LIC | SIDBI

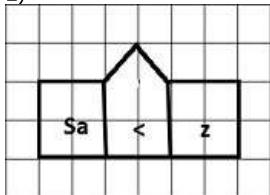
Correct Answer:**Candidate Answer:**

Question 24. If a mirror is placed on the line MN, then which of the answer figures is the right image of the given figure?

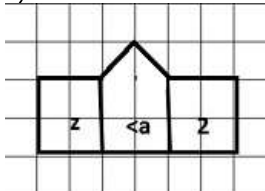
यदि एक दर्पण को MN रेखा पर रखा जाए तो दी गई उत्तर आकृतियों में से कौन-सी आकृति प्रश्न आकृति का सही प्रतिबिम्ब होगी ?

**Options:**

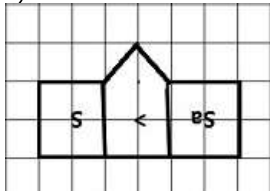
1)



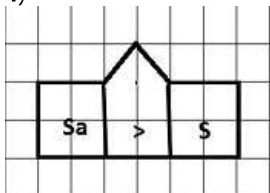
2)



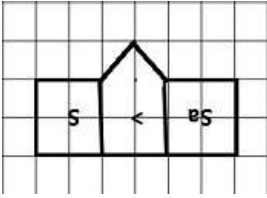
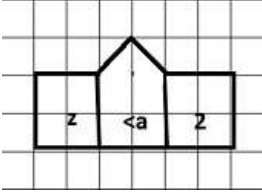
3)



4)



Qmaths.in
SSC | IBPS | RAILWAYS | LIC | SIDBI

Correct Answer:**Candidate Answer:**

Question 25. In the question, a word is represented by only one set of numbers as given in any one of the alternatives. The sets of numbers given in the alternatives are represented by two classes of alphabets as in two matrices given below. The columns and rows of Matrix I are numbered from 0 to 4 and that of Matrix II are numbered from 5 to 9. A letter from these matrices can be represented first by its row and next by its column, e.g., G can be represented by 03, 12, etc., and 'L' can be represented by 57, 65, etc. Similarly you have to identify the set for the word 'DATE'

निम्नलिखित प्रश्न में विकल्पों में दिए गए संख्या-समूह, अक्षरों के दो वर्गों द्वारा दर्शाए गए हैं, जैसे कि नीचे दिए गए आव्यूहों में हैं। आव्यूह I के स्तम्भ और पंक्ति की संख्या 0 से 4 तक दी गई है, और आव्यूह II के 5 से 9 तक, इन आव्यूहों से एक अक्षर को पहले उसकी पंक्ति और बाद में स्तम्भ संख्या द्वारा दर्शाया जा सकता है। उदाहरण के लिए 'G' को 03, 12 आदि द्वारा दर्शाया जा सकता है तथा 'L' को 57, 65 आदि द्वारा दर्शाया जा सकता है। इसी तरह से आपको दिए हुए शब्द 'DATE' के लिए समूह को पहचानना है।

| | | | | | |
|---|---|---|---|---|---|
| 0 | 0 | 1 | 2 | 3 | 4 |
| 0 | D | T | S | G | N |
| 1 | T | S | G | N | D |
| 2 | S | G | N | D | T |
| 3 | G | N | D | T | S |
| 4 | N | D | T | S | G |

| | 5 | 6 | 7 | 8 | 9 |
|---|---|---|---|---|---|
| 5 | A | E | L | K | I |
| 6 | L | K | I | A | E |
| 7 | K | I | A | E | L |
| 8 | E | L | K | I | A |
| 9 | I | A | E | L | K |

Options:

1) 23, 68, 24, 97

2) 14, 96, 11, 85

3) 23, 96, 40, 85

4) 32, 89, 10, 68

Correct Answer: 23, 68, 24, 97**Candidate Answer:** 23, 68, 24, 97

Question 26. MUDRA Bank has been launched to help

मुद्रा बैंक किसकी सहायता के लिए शुरू की गई है ?

Options:

1) Small business

लघु कारोबार

2) Marginal farmers

सीमांत किसान

3) Poor women

गरीब महिलाएँ

4) Rural sector

ग्रामीण क्षेत्र

Correct Answer: Small business

लघु कारोबार

Candidate Answer: Small business

लघु कारोबार

Question 27. Which of the following controls the insurance business of India?

भारत में निम्नलिखित में से कौन बीमा कारोबार को नियंत्रित करता है ?

Options:

- 1) RBI
आर.बी.आई.
2) IDBI
आई.डी.बी.आई.
3) SEBI
सेबी
4) IRDA
आई.आर.डी.ए.

Correct Answer: IRDA

आई.आर.डी.ए.

Candidate Answer: IRDA

आई.आर.डी.ए.

Question 28. The Speaker of Lok Sabha addresses his letter of resignation to the

लोक सभा अध्यक्ष अपना त्याग पत्र किसे सम्बोधित करते हैं?

Options:

- 1) President of India
भारत के राष्ट्रपति
2) Prime Minister
प्रधानमन्त्री
3) Deputy Speaker of Lok Sabha
लोकसभा के उपाध्यक्ष
4) The Chief Justice of India
भारत के मुख्य न्यायाधीश

Correct Answer: Deputy Speaker of Lok Sabha

लोकसभा के उपाध्यक्ष

Candidate Answer: Deputy Speaker of Lok Sabha

लोकसभा के उपाध्यक्ष

Question 29. Who presided over the first session of the Indian National Congress?

भारतीय राष्ट्रीय काँग्रेस के प्रथम सत्र की अध्यक्षता किसने की ?

Options:

- 1) A.O. Hume
ए.ओ. ह्यूम
2) Surendranath Banerjee
सुरेन्द्रनाथ बनर्जी
3) W.C. Banerjee
डब्ल्यू. सी. बनर्जी
4) Badruddin Tayyabji
बदरुद्दीन तैयबजी

Correct Answer: W.C. Banerjee

डब्ल्यू. सी. बनर्जी

Candidate Answer: W.C. Banerjee

डब्ल्यू. सी. बनर्जी

Question 30. Which of the following writers has called Akbar's Din-i-Ilahi as a monument of his folly, not of wisdom?

निम्नलिखित में से किस लेखक ने अकबर के दीन -ए- इलाही को 'उनकी मूर्खता का, न कि बुद्धिमत्ता का स्मारक' कहा है?

Options:

- 1) Badayuni
बदायुनी
2) Vincent Smith
विंसेंट स्मिथ
3) Barni
बरनी
4) W. Haig
डब्ल्यू. हेग

Correct Answer: Vincent Smith

विंसेंट स्मिथ

Candidate Answer: Vincent Smith

विंसेंट स्मिथ

Question 31. Which of the following region in India is now regarded as an "Ecological Hot Spot"?

निम्नलिखित में से भारत का कौनसा क्षेत्र 'पारिस्थितिकीय अति- क्रियाशील स्थल' (हॉटस्पॉट) माना जाता है ?

Options:

- 1) Western Himalayas
पश्चिमी हिमालय
- 2) Eastern Himalayas
पूर्वी हिमालय
- 3) Western Ghats
पश्चिमी घाट
- 4) Eastern Ghats
पश्चिमी घाट

Correct Answer: Western Ghats

पश्चिमी घाट

Candidate Answer: Eastern Ghats

पश्चिमी घाट

Question 32. The Beaufort scale is used to measure:

ब्यूफर्ट स्केल (पैमाना) से क्या मापा जाता है?

Options:

- 1) Atmospheric pressure
वायुमण्डलीय दाब
- 2) Altitudes of mountains
पर्वतों की ऊँचाई
- 3) Wind velocity
हवा की गति
- 4) Intensity of earthquakes
भूकम्प की तीव्रता

Correct Answer: Wind velocity

हवा की गति

Candidate Answer: Altitudes of mountains

पर्वतों की ऊँचाई

Question 33. The waste management technique that involves the use of micro-organisms to remove or neutralize pollutants from contaminated site is called

कचरा प्रबन्धन की उस प्रणाली को क्या कहते हैं जिसमें सान्द्रित समुच्चय से प्रदूषकों को हटाने या निष्प्रभावी करने के लिए सूक्ष्म जीवों का प्रयोग किया जाता है ?

Options:

- 1) Bio sensor
जैवसंवेदी
- 2) Bio magnification
जैव आवर्धक
- 3) Bio remediation
जैव उपचारीकरण
- 4) Bio concentration
जैव सान्द्रण

Correct Answer: Bio remediation

जैव उपचारीकरण

Candidate Answer: Bio remediation

जैव उपचारीकरण

Question 34. In IT networking, which of the following device is used in physical layer?

सूचना प्रौद्योगिकी नेटवर्किंग में निम्नलिखित युक्तियों की सूची में से कौन-सी युक्ति का प्रयोग भौतिक परत (फिजिकल लेयर) में होता है ?

Options:

- 1) Repeater
रिपीटर
- 2) Router
राउटर
- 3) Transport Gateway
ट्रांसपोर्ट गेटवे
- 4) Bridge
ब्रिज

Correct Answer: Repeater

रिपीटर

Candidate Answer: Router

राउटर

Question 35. The purest form of water in nature is

प्रकृति में पानी का सबसे शुद्ध रूप क्या है ?

Options:

- 1) Rain water
वर्षा का जल
- 2) Lake water
झील का जल
- 3) River water
नदी का जल
- 4) Sea water
समुन्द्र का जल

Correct Answer: Rain water

वर्षा का जल

Candidate Answer: Rain water

वर्षा का जल

Question 36.The source of energy that causes the least global warming is

ऊर्जा का वह कौन-सा स्रोत है जो सबसे कम भूमंडलीय तापमान बढ़ाता है ?

Options:

- 1) coal
कोयला
- 2) Geothermal energy
भूतापीय ऊर्जा
- 3) Natural Gas
प्राकृतिक गैस
- 4) Petroleum
पेट्रोलियम

Correct Answer: Geothermal energy

भूतापीय ऊर्जा

Candidate Answer: Geothermal energy

भूतापीय ऊर्जा

Question 37.The constellation 'Sapta Rishi' is known to Westerners as the

तारामण्डल 'सप्त-ऋषि' को पश्चिम निवासी किस नाम से जानते हैं ?

Options:

- 1) Seven Monks
सेवन मोंक
- 2) Alpha Centauri
अल्फा सेंटोरी
- 3) Big Dipper
बिग डिपर
- 4) Small Bear
स्मॉल बियर

Correct Answer: Big Dipper

बिग डिपर

Candidate Answer: Alpha Centauri

अल्फा सेंटोरी

Question 38.Bridge is the technique used in

ब्रिज' किसमें अपनायी जाने वाली तकनीक है ?

Options:

- 1) Athletics
एथलेटिक्स
- 2) Wrestling
कुश्ती
- 3) Weight lifting
भारोत्तोलन
- 4) Karate
कराटे

Correct Answer: Wrestling

कुश्ती

Candidate Answer: Wrestling

कुश्ती

Question 39.Which of the following books is called the 'Bible of Socialism'?

निम्नलिखित में से किस पुस्तक को 'समाजवाद की बाईबिल' कहते हैं ?

Qmaths.in

SSC | IBPS | RAILWAYS | LIC | SIDBI

Options:

1) Economics of Welfare

इकोनॉमिक्स ऑफ वेलफेयर

2) Das Capital

दास कैपिटल

3) Value and Capital

वैल्यू एण्ड कैपिटल

4) Asian Drama

एसियन ड्रामा

Correct Answer: Das Capital

दास कैपिटल

Candidate Answer: Value and Capital

वैल्यू एण्ड कैपिटल

Question 40. Which country recently detonated its first hydrogen bomb?

निम्नलिखित में से किस देश ने अपने प्रथम हाइड्रोजन बम का हाल में विस्फोट किया?

Options:

1) North Korea

उत्तरी कोरिया

2) South Korea

दक्षिणी कोरिया

3) Iran

ईरान

4) Libya

लीबिया

Correct Answer: North Korea

उत्तरी कोरिया

Candidate Answer: North Korea

उत्तरी कोरिया

Question 41. The Swarna Jayanti Shahari Rojgar Yojna (SJSRY) mainly aims at creating employment opportunities for

स्वर्ण जयन्ती शहरी रोजगार योजना (SJSRY) का मुख्य उद्देश्य किस प्रकार के रोजगार के अवसर उत्पन्न करना है ?

Options:

1) both self employment and wage employment in urban areas

शहरी क्षेत्रों में, स्वरोजगार और मज़दूरी रोजगार दोनों

2) self employment in urban areas only

केवल शहरी क्षेत्रों में स्व रोजगार

3) wage employment in urban areas only

केवल शहरी क्षेत्रों में मज़दूरी रोजगार

4) None of these

इनमें से कोई नहीं

Correct Answer: both self employment and wage employment in urban areas

शहरी क्षेत्रों में, स्वरोजगार और मज़दूरी रोजगार दोनों

Candidate Answer: wage employment in urban areas only

केवल शहरी क्षेत्रों में मज़दूरी रोजगार

Question 42. Who is known as the 'Father of Green Revolution' in India?

भारत में 'हरित-क्रान्ति' का जनक किसे कहा जाता है ?

Options:

1) G. Paul

जी. पॉल

2) Norman Borlaug

नॉर्मन बोरलोग

3) Van Neil

वान नील

4) Dr. Mithchell

डॉ. मिशेल

Correct Answer: Norman Borlaug

नॉर्मन बोरलोग

Candidate Answer: Norman Borlaug

नॉर्मन बोरलोग

Question 43. The component used for tuning a radio is basically a variable _____.

रेडियो की ट्यूनिंग के लिए प्रयुक्त घटक मूलतः एक _____ होता है।

Options:

- 1) Resistor
प्रतिरोधक
- 2) Condenser
संघनक
- 3) Inductor
प्रेरक
- 4) Transformer
ट्रांसफॉर्मर

Correct Answer: Condenser
संघनक

Candidate Answer: Condenser
संघनक

Question 44. Which of the following is not a donor atom?

निम्नलिखित में से कौन दाता परमाणु नहीं है ?

Options:

- 1) Phosphorus
फॉस्फोरस
- 2) Antimony
एंटीमनी
- 3) Arsenic
आर्सेनिक
- 4) Aluminium
एल्युमीनियम

Correct Answer: Aluminium
एल्युमीनियम

Candidate Answer: Antimony
एंटीमनी

Question 45. Which one of the following party was founded by Subhash Chandra Bose?

सुभाष चन्द्र बोस ने निम्नलिखित में से किस पार्टी की स्थापना की थी ?

Options:

- 1) Abhinav Bharat
अभिनव भारत
- 2) Azad Hind Sena
आजाद हिन्द सेना
- 3) Revolutionary Army
रिवोल्यूशनरी आर्मी
- 4) Forward Block
फॉरवर्ड ब्लॉक

Correct Answer: Forward Block
फॉरवर्ड ब्लॉक

Candidate Answer: Forward Block
फॉरवर्ड ब्लॉक

Question 46. 0°K is equivalent to

0°K किसके बराबर है ?

Options:

- 1) 273°C
- 2) -273°C
- 3) 0°C
- 4) 100°C

Correct Answer: -273°C

Candidate Answer: -273°C

Question 47. The oxygen liberated during photosynthesis comes from

प्रकाश-संश्लेषण के दौरान उन्मुक्त ऑक्सीजन कहाँ से आती है ?

Options:

- 1) Water
पानी
- 2) Carbon dioxide
कार्बन डाई-ऑक्साइड
- 3) Glucose
ग्लूकोस
- 4) Chlorophyll
क्लोरोफिल

Correct Answer: Water

पानी

Qmaths.in
SSC | IBPS | RAILWAYS | LIC | SIDBI

Candidate Answer: Carbon dioxide
कार्बन डाई-ऑक्साइड

Downloaded from www.qmaths.in

Question 48. First national park of India that was established in 1936 was named as

भारत में 1936 में स्थापित प्रथम राष्ट्रीय उद्यान का क्या नाम रखा गया था ?

Options:

1) Kanha National Park

कान्हा राष्ट्रीय उद्यान

2) Bharatpur National Park

भरतपुर राष्ट्रीय उद्यान

3) Hailey National Park

हेली राष्ट्रीय उद्यान

4) Rajaji National Park

राजाजी राष्ट्रीय उद्यान

Correct Answer: Hailey National Park

हेली राष्ट्रीय उद्यान

Candidate Answer: Hailey National Park

हेली राष्ट्रीय उद्यान

Question 49. Who is the 1st Indian female amputee to climb Mount Everest?

माउण्ट एवरेस्ट पर चढ़ने वाली प्रथम छिन्न अंग वाली भारतीय महिला कौन है ?

Options:

1) Arunima Sinha

अरूणिमा सिन्हा

2) Bachendri Pal

बचेन्द्री पाल

3) Santosh Yadav

सन्तोष यादव

4) Premalata Agarwal

प्रेमलता अग्रवाल

Correct Answer: Arunima Sinha

अरूणिमा सिन्हा

Candidate Answer: Arunima Sinha

अरूणिमा सिन्हा

Question 50. The term 'Higgs Boson' is associated with

' हिग्स बोसोन ' शब्द का सम्बन्ध किससे है ?

Options:

1) Nano Technology

नैनो टेक्नोलॉजी (अतीसूक्ष्म प्रौद्योगिकी)

2) Oncology

ऑन्कोलॉजी

3) God Particle

गॉड पार्टिकल

4) Stem Cell Research

स्टेम सेल रिसर्च

Correct Answer: God Particle

गॉड पार्टिकल

Candidate Answer: God Particle

गॉड पार्टिकल

Question 51. If 100 cats kill 100 mice in 100 days, then 4 cats would kill 4 mice in how many days?

यदि 100 बिल्लियाँ 100 दिन में 100 चूहे मारती हैं तो 4 बिल्लियाँ 4 चूहे कितने दिन में मारेगी ?

Options:

1) 4 days

4 दिन

2) 3 days

3 दिन

3) 40 days

40 दिन

4) 100 days

100 दिन

Correct Answer: 100 days

100 दिन

Candidate Answer: 100 days

100 दिन

Qmaths.in
SSC | IBPS | RAILWAYS | LIC | SIDBI

Visit www.qmaths.in for tons of free study materials and latest exam updates.

Question 52.

In $\triangle ABC$, $DE \parallel BC$ such that $\frac{AD}{BD} = \frac{3}{5}$. If $AC = 5.6$ cm, then AE is equal to

Downloaded from www.qmaths.in

$\triangle ABC$ में, $DE \parallel BC$ इस प्रकार है कि $\frac{AD}{BD} = \frac{3}{5}$ यदि $AC = 5.6$ सेमी, तो AE किसके बराबर है ?

Options:

- 1) 4.2 cm
- 4.2 से.मी.
- 2) 3.1 cm
- 3.1 से.मी.
- 3) 2.8 cm
- 2.8 से.मी.
- 4) 2.1 cm
- 2.1 से.मी.

Correct Answer: 2.1 cm

2.1 से.मी.

Candidate Answer: 2.1 cm

2.1 से.मी.

Question 53. If two circles touch each other internally. The greater circle has its radius as 6 cm and the distance between the centres of the circles is 2 cm. The radius of the other circle is

दो वृत्त अन्दर से एक-दूसरे को स्पर्श करते हैं। बड़े वृत्त की त्रिज्या 6 से.मी. है और वृत्तों के केन्द्रों के बीच की दूरी 2 से.मी. है तो दूसरे वृत्त की त्रिज्या कितनी है ?

Options:

- 1) 3 cm
- 3 से.मी.
- 2) 4 cm
- 4 से.मी.
- 3) 2 cm
- 2 से.मी.
- 4) 5 cm
- 5 से.मी.

Correct Answer: 4 cm

4 से.मी.

Candidate Answer: 4 cm

4 से.मी.

Question 54. An office opens at 10 AM and closes at 5 PM. The lunch interval is 30 minutes. The ratio of lunch interval to the total period of office hours is

एक कार्यालय प्रातः 10 बजे खुलता है और सायं 5 बजे बंद होता है। भोजनावकाश 30 मिनट का होता है। भोजनावकाश और कार्यालय की कुल अवधि का अनुपात क्या है ?

Options:

- 1) 1:7
- 2) 1:14
- 3) 7:1
- 4) 14:1

Correct Answer: 1:14**Candidate Answer:** 1:14

Question 55. A Bookseller allowed 15% discount on the books sold. Sunil purchased books worth Rs.1500. How much will he have to pay to Bookseller.

एक पुस्तक विक्रेता ने बेची गई पुस्तकों पर 15% की छूट दी। सुनील ने Rs.1500 की पुस्तकें खरीदी। पुस्तक विक्रेता को कितनी राशि का भुगतान करना होगा ?

Options:

- 1) Rs.1200
- 2) Rs.1250
- 3) Rs.1275
- 4) Rs.1300

Correct Answer: Rs.1275**Candidate Answer:** Rs.1275

Question 56. If the ratio between the profit and sale price of an article is 1:5, then the ratio between the sale price and the cost price of that article is:

यदि एक वस्तु के लाभ और बिक्री मूल्य के बीच 1:5 का अनुपात है, तो उस वस्तु के बिक्री मूल्य और लागत मूल्य के बीच अनुपात क्या है ?

Visit www.qmaths.in for tons of free study materials and latest exam updates.

Options:

1) 3:2

2) 4:3

3) 5:4

4) 6:5

Correct Answer: 5:4**Candidate Answer:** 5:4

Question 57. What percent of 1 day is 36 minutes?

36 मिनट, एक दिन का कितना प्रतिशत होगा ?

Options:

1) 25%

2) 2.5%

3) 3.6%

4) 0.25%

Correct Answer: 2.5%**Candidate Answer:** 2.5%

Question 58.

*A car covers a certain distance in 25 hrs. If it reduces the speed**by $\frac{1}{5}$ th, the car covers 200 km less in that time. The speed of car is*एक कार कुछ दूरी 25 घण्टे में तय करती है। यदि वह अपनी कार की गति $\frac{1}{5}$ भाग

कम कर दें, तो कार उतने समय में 200 किमी कम दूरी तय कर सकेगी। कार की गति कितनी है ?

Options:

1) 60 km/hr

60 कि.मी./घंटा

2) 30 km/hr

30 कि.मी./घंटा

3) 40 km/hr

40 कि.मी./घंटा

4) 50 km/hr

50 कि.मी./घंटा

Correct Answer: 40 km/hr

40 कि.मी./घंटा

Candidate Answer: 40 km/hr

40 कि.मी./घंटा

Question 59. At what percent of simple interest will a sum of money double itself in 15 years?

कोई मूल राशि कितने प्रतिशत के साधारण ब्याज पर 15 वर्ष में दुगुनी हो जाएगी ?

Options:

1)

 $6\frac{1}{3}\%$

2)

 $6\frac{2}{3}\%$

3)

 $6\frac{1}{2}\%$

4) 6%

Correct Answer: $6\frac{2}{3}\%$ **Candidate Answer:** $6\frac{2}{3}\%$

Qmaths.in

SSC | IBPS | RAILWAYS | LIC | SIDBI

Question 60.

$\frac{1}{\sqrt{a}} - \frac{1}{\sqrt{b}} = 0$, then the value of $\frac{1}{a} + \frac{1}{b}$ is:

Downloaded from www.qmaths.in

यदि $\frac{1}{\sqrt{a}} - \frac{1}{\sqrt{b}} = 0$, तो $\frac{1}{a} + \frac{1}{b}$ का मान क्या है ?

Options:

1)

$$\frac{1}{\sqrt{ab}}$$

2)

$$\sqrt{ab}$$

3)

$$\frac{2}{\sqrt{ab}}$$

4)

$$\frac{1}{2\sqrt{ab}}$$

Correct Answer:

$$\frac{2}{\sqrt{ab}}$$

Candidate Answer:

$$\frac{2}{\sqrt{ab}}$$

Question 61. If $x^2 + y^2 + z^2 = 14$ and $xy + yz + zx = 11$, then the value of $(x+y+z)^2$ is

यदि $x^2 + y^2 + z^2 = 14$ और $xy + yz + zx = 11$, तो $(x+y+z)^2$ का मान क्या है ?

Options:

1) 16

2) 25

3) 36

4) 49

Correct Answer: 36**Candidate Answer:** 36

Question 62.

If $\sqrt{2} \tan 2\theta = \sqrt{6}$ and $0^\circ < \theta < 45^\circ$, then the value of $\sin \theta + \sqrt{3} \cos \theta - 2 \tan^2 \theta$ is

यदि $\sqrt{2} \tan 2\theta = \sqrt{6}$ और $0^\circ < \theta < 45^\circ$, तो

$\sin \theta + \sqrt{3} \cos \theta - 2 \tan^2 \theta$ का मान क्या होगा?

Options:1) $2/3$ 2) $4/3$

3) 2

4) $8/3$ **Correct Answer:** $4/3$ **Candidate Answer:** $4/3$

Question 63. A positive number when decreased by 4, is equal to 21 times the reciprocal of this number. The number is:

एक धनात्मक संख्या से 4 कम करने पर वह उसके व्युत्क्रम की 21 गुणा के बराबर हो जाती है। वह संख्या क्या है ?

Visit www.qmaths.in for tons of free study materials and latest exam updates.

Options:

1) 3

2) 7

3) 5

4) 9

Correct Answer: 7**Candidate Answer:** 7

Question 64.

If $\tan \alpha = 2$, then the value of $\frac{\sin \alpha}{\sin^3 \alpha + \cos^3 \alpha}$ is

यदि $\tan \alpha = 2$, तो $\frac{\sin \alpha}{\sin^3 \alpha + \cos^3 \alpha}$ का मान क्या है ?

Options:

1)

 $\frac{2}{9}$

2)

 $\frac{\sqrt{5}}{9}$

3)

 $\frac{10}{9}$

4)

 $\frac{5\sqrt{5}}{9}$ **Correct Answer:** $\frac{10}{9}$ **Candidate Answer:** $\frac{10}{9}$

Qmaths.in
SSC | IBPS | RAILWAYS | LIC | SIDBI

Question 65.

If $x = \sqrt[3]{28}$, $y = \sqrt[3]{27}$, then the value of $x + y - \frac{1}{x^2 + xy + y^2}$ is

यदि $x = \sqrt[3]{28}$ और $y = \sqrt[3]{27}$, तो $x + y - \frac{1}{x^2 + xy + y^2}$ का मान क्या है ?

Options:

1) 8

2) 7

3) 6

4) 5

Correct Answer: 6**Candidate Answer:** 6

Question 66.

If $x = 12$ and $y = 4$, then the value of $(x + y)^{\frac{x}{y}}$ is

यदि $x = 12$ और $y = 4$, तो $(x + y)^{\frac{x}{y}}$ का मान क्या है ?

Options:

1) 48

2) 1792

3) 4096

4) 570

Correct Answer: 4096**Candidate Answer:** 4096**Downloaded from www.qmaths.in**

Question 67. In a triangle PQR, $PQ = PR$ and $\angle Q$ is twice that of $\angle P$. Then $\angle Q$ is equal to

एक त्रिभुज PQR में, $PQ = PR$ और $\angle Q$, $\angle P$ से दुगुना है। तो $\angle Q$ किसके बराबर है ?

Options:1) 72° 2) 36° 3) 144° 4) 108° **Correct Answer:** 72° **Candidate Answer:** 72°

Question 68. If the length of a chord of a circle is 16 cm and is at a distance of 15 cm from the centre of the circle, then the radius of the circle (in cm) is:

यदि एक वृत्त की जीवा की लंबाई 16 से.मी. है और वह वृत्त के केन्द्र से 15 से.मी. की दूरी पर है, तो वृत्त की त्रिज्या (से.मी.) में कितनी होगी ?

Options:

1) 15

2) 16

3) 17

4) 34

Correct Answer: 17**Candidate Answer:** 17

Question 69. On 24th May 2008 the maximum temperature of Delhi, Kolkata and Mumbai were recorded as 35°C , 33°C and 34°C respectively. What was the maximum temperature of Chennai so that the average maximum temperature of those cities would be 35° ?

24 मई 2008 को, दिल्ली, कोलकाता और मुंबई का अधिकतम तापमान क्रमशः 35°C , 33°C और 34°C दर्ज किया गया। चेन्नई का अधिकतम तापमान क्या था यदि इन शहरों का औसत अधिकतम तापमान 35°C होता ?

Options:1) 34°C 2) 35°C 3) 36°C 4) 38°C **Correct Answer:** 38°C **Candidate Answer:** 38°C

Question 70. The diameter of a sphere is twice the diameter of another sphere. The curved surface area of the first and the volume of the second are numerically equal. The numerical value of the radius of the first sphere is

एक गोले का व्यास दूसरे गोले के व्यास का दुगुना है। पहले का वक्रित सतही क्षेत्र दूसरे के आयतन के संख्या की द्रष्टि से बराबर है। पहले गोले की त्रिज्या का संख्यात्मक मान कितना है ?

Options:

1) 3

2) 24

3) 8

4) 16

Correct Answer: 24**Candidate Answer:** 24

Question 71. The thread of a kite makes 60° angle with the horizontal plane. If the length of the thread be 80 m, then the vertical height of the kite will be

एक पतंग का मांझा क्षैतिज सतह के साथ 60° का कोण बनाता है। यदि मांझे की लंबाई 80 मी. है, तो पतंग की ऊर्ध्वाधर ऊँचाई कितनी होगी ?

Options:

1) $\frac{40}{\sqrt{3}}m$

2) $80\sqrt{3}m$

3) $80m$

4) $40\sqrt{3}m$

Correct Answer:

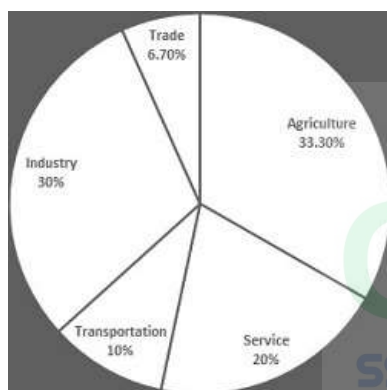
$40\sqrt{3}m$

Candidate Answer:

$40\sqrt{3}m$

Question 72. Study the pie chart carefully and answer the questions. The pie chart represents the percentage of people involved in various occupations. Total number of people = 20000

निम्नलिखित पाई-चार्ट में विभिन्न व्यवसायों का प्रतिशत दर्शाया गया है। पाई-चार्ट का ध्यानपूर्वक अध्ययन कीजिए और प्रश्न सं0 72 से 75 का उत्तर दीजिए। लोगों की कुल संख्या = 20000



How many more people are involved in service than in trade ?

व्यापार की तुलना में सेवा में संलग्न लोगों की संख्या कितनी है?

Options:

1) 3660

2) 2660

3) 1660

4) 660

Correct Answer: 2660**Candidate Answer:** 2660

Question 73. Study the pie chart carefully and answer the questions. The pie chart represents the percentage of people involved in various occupations. Total number of people = 20000

Downloaded from www.qmaths.in

निम्नलिखित पाई-चार्ट में विभिन्न व्यवसायों का प्रतिशत दर्शाया गया है। पाई-चार्ट का ध्यानपूर्वक अध्ययन कीजिए और प्रश्न सं0 72 से 75 का उत्तर दीजिए। लोगों की कुल संख्या = 20000



The ratio of the people involved in service to that of industry is

सेवा में संलिप्त लोगों और उद्योग में संलिप्त लोगों का अनुपात क्या है ?

Options:

1) 1:2

2) 2:3

3) 3:4

4) 3:2

Correct Answer: 2:3

Candidate Answer: 2:3

Question 74. Study the pie chart carefully and answer the questions. The pie chart represents the percentage of people involved in various occupations. Total number of people = 20000

निम्नलिखित पाई-चार्ट में विभिन्न व्यवसायों का प्रतिशत दर्शाया गया है। पाई-चार्ट का ध्यानपूर्वक अध्ययन कीजिए और प्रश्न सं0 72 से 75 का उत्तर दीजिए। लोगों की कुल संख्या = 20000



The sectorial angle made by the people involved in service in the given pie-chart is

दिए गये पाई-चार्ट में सेवा में संलिप्त लोगों द्वारा बना त्रिज्य कोण कितने अंश का है ?

Options:

1) 36°

2) 90°

3) 72°

4) 108°

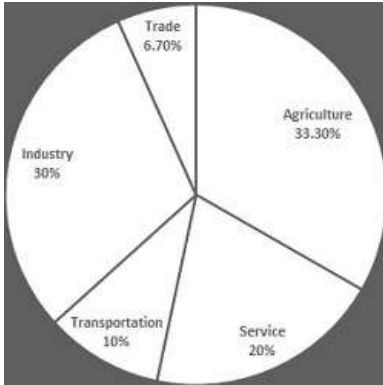
Correct Answer: 72°

Candidate Answer: 72°

Question 75. Study the pie chart carefully and answer the question. The pie chart represents the percentage of people involved in various occupations. Total number of people = 20000

Downloaded from www.qmaths.in

निम्नलिखित पाई-चार्ट में विभिन्न व्यवसायों का प्रतिशत दर्शाया गया है। पाई-चार्ट का ध्यानपूर्वक अध्ययन कीजिए और प्रश्न सं0 72 से 75 का उत्तर दीजिए। लोगों की कुल संख्या = 20000



The difference between the maximum number of people involved and minimum number of people involved in various professions is

विभिन्न व्यवसायों में संलिप्त लोगों की अधिकतम संख्या और न्यूनतम संख्या के बीच अंतर कितना है ?

Options:

1) 2640

2) 3640

3) 6320

4) 5320

Correct Answer: 5320

Candidate Answer: 5320

Question 76. In the following question, out of the four alternatives, choose the word which best expresses the meaning of the given word and click the button corresponding to it.

LABYRINTH

Options:

1) MAZE

2) PATH

3) SKYSCRAPER

4) IMPASSE

Correct Answer: MAZE

Candidate Answer: MAZE

Question 77. In the following question, out of the four alternatives, choose the word which is opposite in meaning to the given word and click the button corresponding to it.

BARREN

Options:

1) FERTILE

2) ABUNDANT

3) HARSH

4) FALLOW

Correct Answer: FERTILE

Candidate Answer: FERTILE

Question 78. Four words are given, out of which only one word is spelt correctly. Choose the correctly spelt word and click the button corresponding to it.

Options:

1) Mysogynous

2) Misogynous

3) Mysoginous

4) Misoginous

Correct Answer: Misogynous

Candidate Answer: Misogynous

Qmaths.in
SSC | IBPS | RAILWAYS | LIC | SIDBI

Question 79. In the following questions, one part of the sentence may have an error. Find out which part of the sentence has an error and click the button corresponding to it. If the sentence is free from error, click the "No error" option.

According to scientists(A)/, there are a lot of(B)/answers about it(C)/No Error(D).

Options:

- 1) A
- 2) B
- 3) C
- 4) D

Correct Answer: C

Candidate Answer: B

Question 80. In the following questions, one part of the sentence may have an error. Find out which part of the sentence has an error and click the button corresponding to it. If the sentence is free from error, click the "No error" option.

They are coming (A)/ straight to (B)/our direction.(C)/No Error(D).

Options:

- 1) A
- 2) B
- 3) C
- 4) D

Correct Answer: B

Candidate Answer: B

Question 81. In the following questions, one part of the sentence may have an error. Find out which part of the sentence has an error and click the button corresponding to it. If the sentence is free from error, click the "No error" option.

The building collapsed(A)/at the afternoon (B)/at about 4 o'clock (C)/No Error(D).

Options:

- 1) A
- 2) B
- 3) C
- 4) D

Correct Answer: B

Candidate Answer: C

Question 82. The sentences given with blanks are to be filled with an appropriate word(s). Four alternatives are suggested for each question. For each question, choose the correct alternative and click the button corresponding to it.

The police is _____ on his activities.

Options:

- 1) keeping an eye
- 2) keeping watchful eyes
- 3) keeping both eyes
- 4) keeping one eye

Correct Answer: keeping an eye

Candidate Answer: keeping an eye

Question 83. The sentences given with blanks are to be filled with an appropriate word(s). Four alternatives are suggested for each question. For each question, choose the correct alternative and click the button corresponding to it.

Are you _____ stamp collecting?

Options:

- 1) interested by
- 2) interested in
- 3) interested at
- 4) interested about

Correct Answer: interested in

Candidate Answer: interested in

Question 84. The sentences given with blanks are to be filled with an appropriate word(s). Four alternatives are suggested for each question. For each question, choose the correct alternative and click the button corresponding to it.

Your report _____ my statement.

Options:

- 1) conforms
- 2) conforming
- 3) confirms
- 4) comforting

Correct Answer: confirms

Candidate Answer: conforms

Question 85. In each of the questions, four alternatives are given for the Idiom/Phrase. Choose the alternative which best expresses the meaning of the Idiom/Phrase and click the button corresponding to it.

To get cold feet

Options:

- 1) Drenched
- 2) Fear
- 3) Felicitate
- 4) Fever

Correct Answer: Fear

Candidate Answer: Fear

Question 86. In each of the questions, four alternatives are given for the Idiom/Phrase. Choose the alternative which best expresses the meaning of the Idiom/Phrase and click the button corresponding to it.

Beside the mark

Options:

- 1) Perfect
- 2) Not to the point
- 3) Relevant
- 4) Charming

Correct Answer: Not to the point

Candidate Answer: Not to the point

Question 87. In each of the questions, four alternatives are given for the Idiom/Phrase. Choose the alternative which best expresses the meaning of the Idiom/Phrase and click the button corresponding to it.

On tenterhooks

Options:

- 1) Happy and excited
- 2) In suspense and anxiety
- 3) Angry and irritated
- 4) Surprised and shocked

Correct Answer: In suspense and anxiety

Candidate Answer: In suspense and anxiety

Question 88. Out of the four alternatives, choose the one which can be substituted for the given words/sentences and click the button corresponding to it.

Property inherited from one's father or ancestors.

Options:

- 1) Patrimony
- 2) Mercenary
- 3) Hereditary
- 4) Aristocracy

Correct Answer: Patrimony

Candidate Answer: Patrimony

Question 89. Out of the four alternatives, choose the one which can be substituted for the given words/sentences and click the button corresponding to it.

A person who is womanish in his habits

Options:

- 1) Feminist
- 2) Philogynist
- 3) Effeminate
- 4) Feminine

Correct Answer: Effeminate

Candidate Answer: Feminist

Question 90. Out of the four alternatives, choose the one which can be substituted for the given words/sentences and click the button corresponding to it.

One who is converted from one religion to another

Options:

- 1) Pilgrim
- 2) Polytheist
- 3) Proselyte
- 4) Presbyte

Correct Answer: Proselyte

Candidate Answer: Proselyte

Question 91. A sentence/a part of the sentence is underlined. Four alternatives are given to the underlined part which will improve the sentence. Choose the correct alternative and click the button corresponding to it. In case no improvement is needed, click the button corresponding to "No improvement".

Do you have some sugar?

Options:

- 1) any sugar
- 2) little sugar
- 3) small sugar
- 4) No improvement

Correct Answer: any sugar

Candidate Answer: any sugar

Question 92. A sentence/a part of the sentence is underlined. Four alternatives are given to the underlined part which will improve the sentence. Choose the correct alternative and click the button corresponding to it. In case no improvement is needed, click the button corresponding to "No improvement".

Iago lied to Othello about his wife

Options:

- 1) lay
- 2) laid
- 3) lain
- 4) No improvement

Correct Answer: No improvement

Candidate Answer: No improvement

Question 93. A sentence/a part of the sentence is underlined. Four alternatives are given to the underlined part which will improve the sentence. Choose the correct alternative and click the button corresponding to it. In case no improvement is needed, click the button corresponding to "No improvement".

It is not possible to tell the entire story in nutshell.

Options:

- 1) in a nutshell
- 2) in the nut
- 3) in a shell
- 4) No improvement

Correct Answer: in a nutshell

Candidate Answer: No improvement

Question 94. A sentence/a part of the sentence is underlined. Four alternatives are given to the underlined part which will improve the sentence. Choose the correct alternative and click the button corresponding to it. In case no improvement is needed, click the button corresponding to "No improvement".

It is all but same to me whether I am transferred to Mumbai or Kolkata.

Options:

- 1) all or same
- 2) all the same
- 3) all one
- 4) No improvement

Correct Answer: all the same

Candidate Answer: all or same

Question 95. A sentence/a part of the sentence is underlined. Four alternatives are given to the underlined part which will improve the sentence. Choose the correct alternative and click the button corresponding to it. In case no improvement is needed, click the button corresponding to "No improvement".

Despite his father's financial assistance he was always hard on

Options:

- 1) hard in
- 2) hard up
- 3) hard out
- 4) No improvement

Correct Answer: hard up

Candidate Answer: hard out

Question 96. A passage is given with 5 questions following it. Read the passage carefully and choose the best answer to each question out of the four alternatives and click the button corresponding to it.

Even the majority of elders turn their homes into hives of worry as they have too little to do in too much time. Those who have retired thus find retirement tiresome when hobbies, instead, could have turned it into a period of creativity and contentment.

This common problem of inability to utilise leisure pleasurably and profitably is not restricted to Indians. In fact, Japanese are the worse sufferers. Their weekends, rather than increase their enjoyment of life, have wreaked havoc on their health and happiness. Unable to while away the long, unstructured hours, many of them have become addicts to coffee or hard liquor, and have even taken to gambling.

How has this social malady come about? Ironically, the syllabus-loaded education system is the main culprit. It places a heavy work-load on children and youth, laying emphasis as it does on memory rather than intelligence.

Why do a majority of retired elders find retirement tiresome?

Options:

- 1) Because their homes have been turned into hives of worry.
- 2) Because they do not have hobbies to utilise their free time.
- 3) Because they had nothing to do.
- 4) Because they had plenty of free time.

Correct Answer: Because they do not have hobbies to utilise their free time.

Candidate Answer: Because their homes have been turned into hives of worry.

Question 97. A passage is given with 5 questions following it. Read the passage carefully and choose the best answer to each question out of the four alternatives and click the button corresponding to it.

Even the majority of elders turn their homes into hives of worry as they have too little to do in too much time. Those who have retired thus find retirement tiresome when hobbies, instead, could have turned it into a period of creativity and contentment.

This common problem of inability to utilise leisure pleasurably and profitably is not restricted to Indians. In fact, Japanese are the worse sufferers. Their weekends, rather than increase their enjoyment of life, have wreaked havoc on their health and happiness. Unable to while away the long, unstructured hours, many of them have become addicts to coffee or hard liquor, and have even taken to gambling.

How has this social malady come about? Ironically, the syllabus-loaded education system is the main culprit. It places a heavy work-load on children and youth, laying emphasis as it does on memory rather than intelligence.

How have the Japanese benefitted from their weekends?

Options:

- 1) They have increased enjoyment in life.
- 2) They enjoy health and happiness.
- 3) They use their free time to increase their enjoyment.
- 4) They become addicts to coffee or hard liquor and gambling.

Correct Answer: They become addicts to coffee or hard liquor and gambling.

Candidate Answer: They become addicts to coffee or hard liquor and gambling.

Question 98. A passage is given with 5 questions following it. Read the passage carefully and choose the best answer to each question out of the four alternatives and click the button corresponding to it.

Even the majority of elders turn their homes into hives of worry as they have too little to do in too much time. Those who have retired thus find retirement tiresome when hobbies, instead, could have turned it into a period of creativity and contentment.

This common problem of inability to utilise leisure pleasurably and profitably is not restricted to Indians. In fact, Japanese are the worse sufferers. Their weekends, rather than increase their enjoyment of life, have wreaked havoc on their health and happiness. Unable to while away the long, unstructured hours, many of them have become addicts to coffee or hard liquor, and have even taken to gambling.

How has this social malady come about? Ironically, the syllabus-loaded education system is the main culprit. It places a heavy work-load on children and youth, laying emphasis as it does on memory rather than intelligence.

The syllabus-loaded education system

Options:

- 1) Places a heavy burden on the youth.
- 2) Ensures that parents pay attention to the development of children.
- 3) Lays emphasis on intelligence.
- 4) Gives students a lot of free time.

Correct Answer: Places a heavy burden on the youth.

Candidate Answer: Places a heavy burden on the youth.

Qmaths.in
SSC | IBPS | RAILWAYS | LIC | SIDBI

Question 99. A passage is given with 5 questions following it. Read the passage carefully and choose the best answer to each question out of the four alternatives and click the button corresponding to it.

Even the majority of elders turn their homes into hives of worry as they have too little to do in too much time. Those who have retired thus find retirement tiresome when hobbies, instead, could have turned it into a period of creativity and contentment.

This common problem of inability to utilise leisure pleasurably and profitably is not restricted to Indians. In fact, Japanese are the worse sufferers. Their weekends, rather than increase their enjoyment of life, have wreaked havoc on their health and happiness. Unable to while away the long, unstructured hours, many of them have become addicts to coffee or hard liquor, and have even taken to gambling.

How has this social malady come about? Ironically, the syllabus-loaded education system is the main culprit. It places a heavy work-load on children and youth, laying emphasis as it does on memory rather than intelligence.

The author thinks that

Options:

- 1) Authorities are more appreciative of the syllabus-loaded education system.
- 2) Hobbies play an important role in changing the unfortunate situation.
- 3) Co-curricular activities are discouraged.
- 4) Only Indians suffer from inability to utilise leisure.

Correct Answer: Hobbies play an important role in changing the unfortunate situation.

Candidate Answer: Co-curricular activities are discouraged.

Question 100. A passage is given with 5 questions following it. Read the passage carefully and choose the best answer to each question out of the four alternatives and click the button corresponding to it.

Even the majority of elders turn their homes into hives of worry as they have too little to do in too much time. Those who have retired thus find retirement tiresome when hobbies, instead, could have turned it into a period of creativity and contentment.

This common problem of inability to utilise leisure pleasurably and profitably is not restricted to Indians. In fact, Japanese are the worse sufferers. Their weekends, rather than increase their enjoyment of life, have wreaked havoc on their health and happiness. Unable to while away the long, unstructured hours, many of them have become addicts to coffee or hard liquor, and have even taken to gambling.

How has this social malady come about? Ironically, the syllabus-loaded education system is the main culprit. It places a heavy work-load on children and youth, laying emphasis as it does on memory rather than intelligence.

The passage tells us that

Options:

- 1) Hobbies are a waste of time
- 2) Hobbies play a crucial role in physical and mental development.
- 3) Hobbies wreak havoc on man's health and happiness.
- 4) Hobbies can turn us into addicts of coffee, liquor or gambling.

Correct Answer: Hobbies play a crucial role in physical and mental development.

Candidate Answer: Hobbies play a crucial role in physical and mental development.

Qmaths.in
SSC | UPSC | RAILWAYS | LIC | SIDBI